

BB Mini User Manual

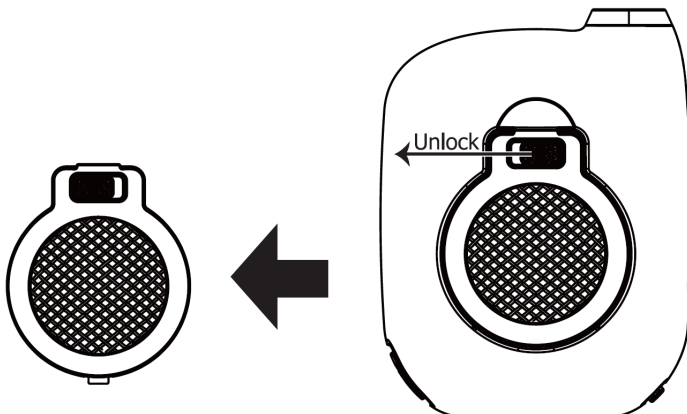
Особенности

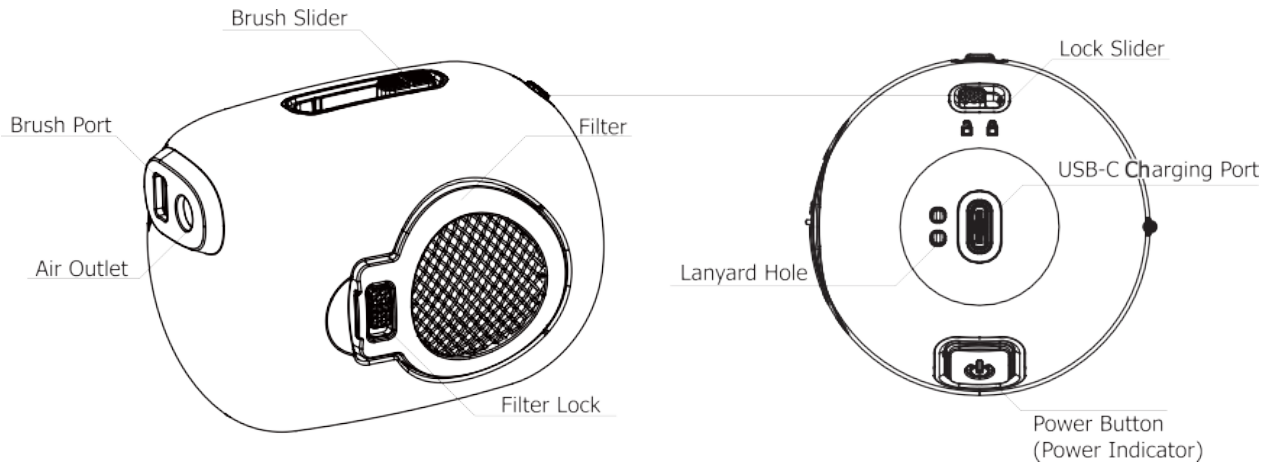
- Portable Cordless Electronic Blower
- Applicable for cleaning photographic equipment and more devices
- Max wind speed of 65 km/h (40.4 mph)
- Built-in 8.88Wh high performance Li-ion battery
- Built-in Li-ion battery management system with a USB-C charging port
- Unidirectional air intake to prevent secondary contamination during cleaning
- Replaceable high density filter included for effective dust filtration
- Power indicator to indicate the remaining battery power
- Silicone nozzle to prevent accidental damage to the object surface
- Made from durable ABS material
- Retractable magnetic quick release brush included
- 2-level wind speed adjustable

Technical Specifications

Input	5V=2A
Rated Power	25W
Battery Capacity	8.88Wh
Cleaning Times	TURBO: Approx. 150 Times SILENT: Approx. 600 Times (10s per time under full charge)
Rotational Speed	25,000 RPM
Wind Speed	TURBO: 65 km/h (40.4 mph) SILENT: 35 km/h (21.7 mph)
Dimensions	90mm x 70mm x 70mm
Weight	219g (7.72 oz)
Accessories	Lanyard, Magnetic Quick Release Brush

Filter Changing





Charging Function

The BB Mini is equipped with an intelligent charging system. Please charge the product before the first use. Use the USB-C cable to connect an external power supply to the charging port to begin the charging process.

- During the charging process, the power indicator beneath the Power Button will turn red and flash to inform the user.
- Once the battery is fully charged, the product will automatically stop charging and the power indicator will turn green.
- Charging time is approx. 1 hour 30 minutes.

Note: The product is unavailable during the charging process.

Operating Instructions

Lockout / Unlock



- Push the Lock Slider to the Lockout Icon to lock the BB Mini.
- Push the Lock Slider to the Unlock Icon to unlock the BB Mini.

Note: The product is unavailable in the lockout status.

Fast Cleaning

When the power is off, press and hold the Power Button to access TURBO Mode and the power indicator will glow blue. Release to turn it off.

Constant Cleaning

On: When the power is off, double press the Power Button to access SILENT Mode and the power indicator will glow blue.

Switching: When the power is on, short press the Power Button to switch between TURBO and SILENT Mode.

Off: When the power is on, long press the Power Button to turn it off.

Magnetic Quick Release Brush

Push the Brush Slider to the top end to push out the brush; push the Brush Slider to the bottom end to store the brush.

Note: The product comes with a Camera Body Cleaning Brush. Lens Cleaning Brush is optional and applicable to be used with the BB Mini.

Power Indication

When the power is off, short press the Power Button and the power indicator will glow to indicate the remaining battery power:

Color of Indicator	Remaining Power
Green	Above 50%
Blue	Below 50%
Red	Below 10% (Please recharge the product as soon as possible when it cannot be turned on due to low power.)

Note: If keep using the product when the power is too low, the blue indicator will gradually dim until it goes out, and the product will automatically stop working.

Warnings

1. Use the product for the specified purposes only. Misuse of the product may be risky.
2. Please read the user manual carefully before using the product. Connect the applicable power source only according to the specifications in this user manual to charge the product.
3. Please recharge the product every 3 months without a long-time usage.
4. Ambient Temperature of Usage: -10~40°C (14~104°F); Temperature of Storage: -20~60°C (-4~140°F)
5. DO NOT put any foreign objects into the air inlet, outlet or the charging port.
6. DO NOT cover the air inlet when using the product.
7. DO NOT use the product without a filter, or it will gather dust in the air inlet.
8. Stop using the product at any sign of malfunction.
9. Store the product in ventilated areas. DO NOT use any liquid to clean the product. Keep it away from any combustible material.
10. DO NOT store or use the product in an environment where the temperature is extremely high / low or changes rapidly, or in a confined area with a high temperature.